

JBoss ESB 4.2.1 GA

Registry Service

JBESB-RS-11/15/07



Legal Notices

The information contained in this documentation is subject to change without notice.

JBoss Inc. makes no warranty of any kind with regard to this material, including, but not limited to, the implied warranties of merchantability and fitness for a particular purpose. JBoss Inc. shall not be liable for errors contained herein or for incidental or consequential damages in connection with the furnishing, performance, or use of this material.

Java™ and J2EE is a U.S. trademark of Sun Microsystems, Inc. Microsoft® and Windows NT® are registered trademarks of Microsoft Corporation. Oracle® is a registered U.S. trademark and Oracle9™, Oracle9 Server™ Oracle9 Enterprise Edition™ are trademarks of Oracle Corporation. Unix is used here as a generic term covering all versions of the UNIX® operating system. UNIX is a registered trademark in the United States and other countries, licensed exclusively through X/Open Company Limited.

Copyright

JBoss, Home of Professional Open Source Copyright 2006, JBoss Inc., and individual contributors as indicated by the @authors tag. All rights reserved.

See the copyright.txt in the distribution for a full listing of individual contributors. This copyrighted material is made available to anyone wishing to use, modify, copy, or redistribute it subject to the terms and conditions of the GNU General Public License, v. 2.0. This program is distributed in the hope that it will be useful, but WITHOUT A WARRANTY; without even the implied warranty of MERCHANTABILITY or FITNESS FOR A PARTICULAR PURPOSE.

See the GNU General Public License for more details. You should have received a copy of the GNU General Public License, v. 2.0 along with this distribution; if not, write to the Free Software Foundation, Inc., 51 Franklin Street, Fifth Floor, Boston, MA 02110-1301, USA.

Software Version

JBoss ESB 4.2.1 GA

Restricted Rights Legend

Use, duplication, or disclosure is subject to restrictions as set forth in contract subdivision (c)(1)(ii) of the Rights in Technical Data and Computer Software clause 52.227-FAR14.

© Copyright 2007 JBoss Inc.

Contents

Table of Contents

Contents.....iv	Using JAXR.....13
	Using Scout and jUDDI.....13
About This Guide.....5	Chapter 3.....15
What This Guide Contains.....5	Configuration Examples.....15
Audience.....5	Introduction.....15
Prerequisites.....5	Embedded.....15
Organization.....5	RMI using the juddi.war or jbossesb.sar.....16
Documentation Conventions.....5	RMI using your own JNDI Registration of the
Additional Documentation.....6	RMI Service.....17
Contacting Us.....6	2.4 SOAP.....19
What is the Registry?.....8	Clustered JBossAS.....21
Introduction.....8	UDDI Browser.....22
Why do I need it ?.....8	Introduction.....22
How do I use it ?.....8	UB setup.....22
Registry Vs Repository.....8	Chapter 4.....25
SOA components.....9	Troubleshooting.....25
UDDI.....9	Scout and jUDDI pitfalls.....25
The Registry and JBossESB.....10	More Information.....25
Configuring the Registry.....11	
Introduction.....11	
The components involved.....12	
The Registry Implementation Class.....12	

About This Guide

What This Guide Contains

The Registry Service contains contain important information on changes to JBoss ESB 4.2.1 GA since the last release and information on any outstanding issues.

Audience

This guide is most relevant to engineers who are responsible for administering JBoss ESB 4.2.1 GA installations.

Prerequisites

None.

Organization

This guide contains the following chapters:

- **Chapter 1, What is the Registry:** an overview of what the registry provides and how it is used in JBossESB.
- **Chapter 2, Configuration:** this chapter contains information on how to configure the registry
- **Chapter 2, Example Configurations:** this chapter illustrates some useful configurations..
- **Chapter 3, Troubleshooting:** information covering how to diagnose and fix common problems.

Documentation Conventions

The following conventions are used in this guide:

Convention	Description
<i>Italic</i>	In paragraph text, italic identifies the titles of documents that are being referenced. When used in conjunction with the Code text described below, italics identify a variable that should be replaced by the user with an actual value.
Bold	Emphasizes items of particular importance.
Code	Text that represents programming code.
Function Function	A path to a function or dialog box within an interface. For example, "Select File Open." indicates that you should select the Open function from the File menu.
() and	<p>Parentheses enclose optional items in command syntax. The vertical bar separates syntax items in a list of choices. For example, any of the following three items can be entered in this syntax:</p> <pre>persistPolicy (Never OnTimer OnUpdate NoMoreOftenThan)</pre>
Note:	A note highlights important supplemental information.
Caution:	A caution highlights procedures or information that is necessary to avoid damage to equipment, damage to software, loss of data, or invalid test results.

Table 1 Formatting Conventions

Additional Documentation

In addition to this guide, the following guides are available in the JBoss ESB 4.2.1 GA documentation set:

1. **JBoss ESB 4.2.1 GA Trailblazer Guide:** Provides guidance for using the trailblazer example.
2. **JBoss ESB 4.2.1 GA Getting Started Guide:** Provides a quick start reference to configuring and using the ESB.
3. **JBoss ESB 4.2.1 GA Programmers Guide:** How to use JBossESB.
4. **JBoss ESB 4.2.1 GA Release Notes:** Information on the differences between this release and previous releases.
5. **JBoss ESB 4.2.1 GA Administration Guide:** How to manage the ESB.

Contacting Us

Questions or comments about JBoss ESB 4.2.1 GA should be directed to our support team.

What is the Registry?

Introduction

In the context of SOA, a registry provides applications and businesses a central point to store information about their services. It is expected to provide the same level of information and the same breadth of services to its clients as that of a conventional market place. Ideally a registry should also facilitate the automated discovery and execution of e-commerce transactions and enabling a dynamic environment for business transactions. Therefore, a registry is more than an “e-business directory”. It is an inherent component of the SOA infrastructure.

Why do I need it ?

It is not difficult to discover, manage and interface with business partners on a small scale, using manual or ad hoc techniques. However, this approach does not scale as the number of services, the frequency of interactions, the physical distributed nature of the environment, increases. A registry solution based on agreed upon standards provides a common way to publish and discover services. It offers a central place where you query whether a partner has a service that is compatible with in-house technologies or to find a list of companies that supports shipping services on other side of the globe.

Service registries are central to most service oriented architectures and at runtime act as a contact point to correlate service requests to concrete behaviors. A service registry has meta-data entries for all artifacts within the SOA that are used at both runtime and design time. Items inside a service registry may include service description artifacts (e.g., WSDL), Service Policy descriptions, various XML schema used by services, artifacts representing different versions of services, governance and security artifacts (e.g., certificates, audit trails), etc. During the design phase, business process designers may use the registry to link together calls to several services to create a workflow or business process.

The registry may be replicated or federated to improve performance and reliability. It need not be a single point of failure.

How do I use it ?

From a business analyst’s perspective, it is similar to an Internet search engine for business processes. From a developers perspective, they use the registry to publish services and query the registry to discover services matching various criteria.

Registry Vs Repository

A registry allows for the registration of services, discovery of metadata and classification of entities into predefined categories. Unlike a repository, it does not have the ability to store business process definitions or WSDL or any other

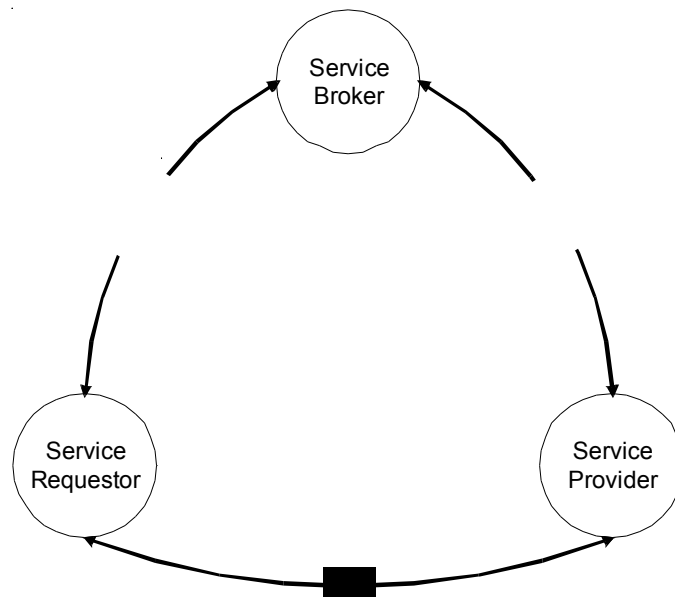
documents that are required for trading agreements. A registry is essentially a catalogue of items, whereas a repository maintains those items.

SOA components

As the W3C puts it: *An SOA is a specific type of distributed system in which the agents are "services"* (<http://www.w3.org/TR/2003/WD-ws-arch-20030808/#id2617708>).

The key components of a Service Oriented Architecture are the messages that are exchanged, agents that act as service requesters and service providers, and shared transport mechanisms that allow the flow of messages. A description of a service that exists within an SOA is essentially just a description of the message exchange pattern between itself and its users. Within an SOA there are thus three critical roles: requester, provider, and broker.

- *Service provider*: allows access to services, creates a description of a service and publishes it to the service broker.
- *Service broker*: hosts a registry of service descriptions. It is responsible for linking a requestor to a service provider.
- *Service requester*: is responsible for discovering a service by searching through the service descriptions given by the service broker. A requestor is also responsible for binding to services provided by the service provider.



UDDI

The Universal Distribution, Discover and Interoperability registry is a directory service for Web Services. It enables service discovery through queries to the UDDI registry at design time or at run time. It also allows providers to publish descriptions of their services to the registry. The registry typically contains a URL that locates the

WSDL document for the web services and contact information for the service provider. Within UDDI information is classified into the following categories.

- White pages: contain general information such as the name, address and other contact information about the company providing the service.
- Yellow pages: categorize businesses based on the industry their services cater to.
- Green pages: provide information that will enable a client to bind to the service that is being provided.

The Registry and JBossESB

The registry plays a central role within JBossESB. It is used to store endpoint references (EPRs) for the services deployed within the ESB. It may be updated dynamically when services first start-up, or statically by an external administrator.

As with all environments within which registries reside, it is not possible for the registry to determine the liveness of the entities its data represents, e.g., if an EPR is registered with the registry then there can be no guarantee that the EPR is valid (it may be malformed) or it may represent a services that is no longer active. At present JBossESB does not perform life-cycle monitoring of the services that are deployed within it. As such, if services fail or move elsewhere, their EPRs that may reside within the registry will remain until they are explicitly updated or removed by an administrator. Therefore, if you get warnings or errors related to EPRs obtained from the registry, you should consider removing any out-of-date items.

Configuring the Registry

Introduction

The JBossESB Registry architecture allows for many ways to configure the ESB to use either a Registry or Repository. By default we use a JAXR implementation (Scout) and a UDDI (jUDDI), in an embedded way.

The following properties can be used to configure the JBossESB Registry. In the `jbossesb-properties.xml` there is section called 'registry':

```
<properties name="registry">
  <property name="org.jboss.soa.esb.registry.implementationClass"
value="org.jboss.internal.soa.esb.services.registry.JAXRRegistryImpl"/>
  <property name="org.jboss.soa.esb.registry.factoryClass"
value="org.apache.ws.scout.registry.ConnectionFactoryImpl"/>
  <property name="org.jboss.soa.esb.registry.queryManagerURI"
value="org.apache.juddi.registry.local.InquiryService#inquire"/>
  <property name="org.jboss.soa.esb.registry.lifeCycleManagerURI"
value="org.apache.juddi.registry.local.PublishService#publish"/>
  <property name="org.jboss.soa.esb.registry.user"
value="jbossesb"/>
  <property name="org.jboss.soa.esb.registry.password"
value="password"/>
  <!-- the following parameter is scout specific to set the type of
communication between scout and the UDDI (embedded, rmi, soap) -->
  <property name="org.jboss.soa.esb.scout.proxy.transportClass"
value="org.apache.ws.scout.transport.LocalTransport"/>
</properties>
```

In short, the properties are

1. `org.jboss.soa.esb.registry.implementationClass`, a class that implements the `jbossesb Registry` interface. We have provided one implementation (`JAXRRegistry` interface).
2. `org.jboss.soa.esb.registry.factoryClass`, the class name of the JAXR `ConnectionFactory` implementation.
3. `org.jboss.soa.esb.registry.queryManagerURI`, the URI used by JAXR to query.
4. `org.jboss.soa.esb.registry.lifeCycleManagerURI`, the URI used by JAXR to edit.
5. `org.jboss.soa.esb.registry.user`, the user used for edits.

6. `org.jboss.soa.esb.registry.password`, the password to go along with the user.
7. `org.jboss.soa.esb.scout.proxy.transportClass`, the name of the class used by scout to do the transport from scout to the UDDI.

The components involved

The registry can be configured in many ways. Figure 1 shows a blue print of all the registry components. From the top down we can see that the JBossESB funnels all interaction with the registry through the Registry Interface. By default it then calls into a JAXR implementation of this interface. The JAXR API needs an implementation, which by default is Scout. The Scout JAXR implementation calls into a jUDDI registry. However there are many other configuration options.

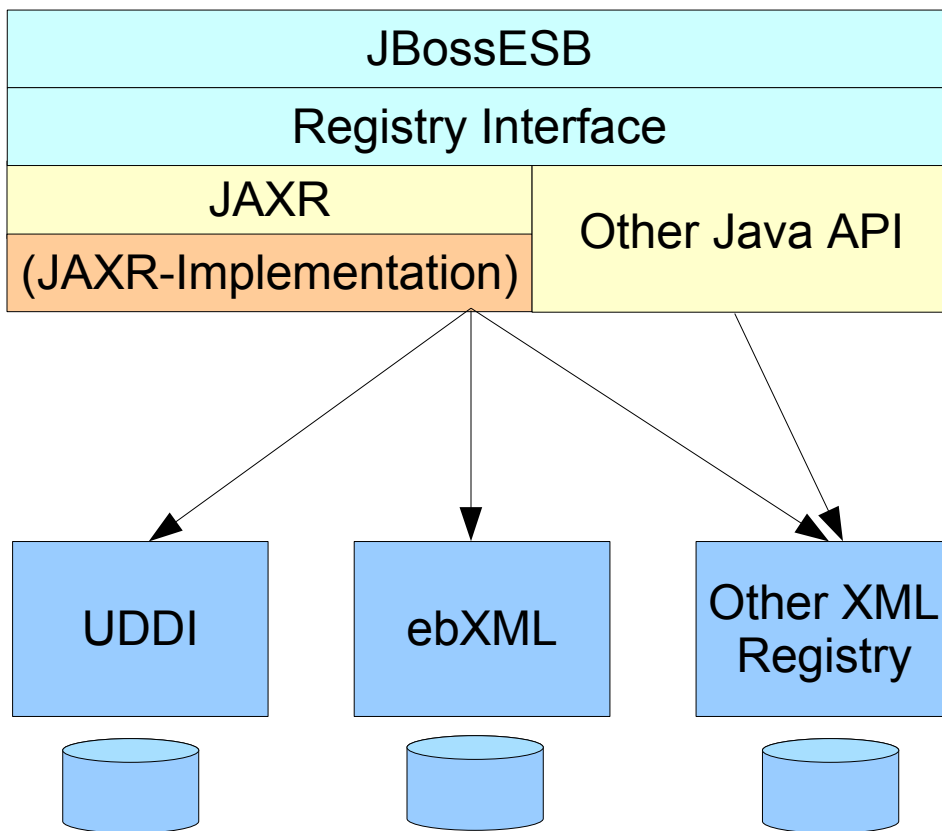


Figure 1. Blue print of the Registry component architecture.

The Registry Implementation Class

Property: `org.jboss.soa.esb.registry.implementationClass`

By default we use the JAXR API. The JAXR API is a convenient API since it allows us to connect any kind of XML based registry or repository. However, if for example you want to use Systinet's Java API you can do that by writing your own `SystinetRegistryImplementation` class and referencing it in this property.

Using JAXR

Property: `org.jboss.soa.esb.registry.factoryClass`

If you decided to use JAXR then you will have to pick which JAXR implementation to use. This property is used to configure that class. By default we use Scout and therefore it is set to the scout factory `'org.apache.ws.scout.registry.ConnectionFactoryImpl'`. The next step is to tell the JAXR implementation the location of the registry or repository for querying and updating, which is done by setting the `org.jboss.soa.esb.registry.queryManagerURI`, and `org.jboss.soa.esb.registry.lifeCycleManagerURI` respectively, along with the username (`org.jboss.soa.esb.registry.user`) and password (`org.jboss.soa.esb.registry.password`) for the UDDI.

Using Scout and jUDDI

Property: `org.jboss.soa.esb.scout.proxy.transportClass`

When using Scout and jUDDI there is an additional parameter that one can set. This is the transport class that should be used for communication between Scout and jUDDI. Thus far there are 4 implementations of this class which are based on SOAP, SAAJ, RMI and Local (embedded java). Note that when you change the transport, you will also have to change the query and lifecycle URIs. For example:

SOAP

```
queryManagerURI      http://localhost:8080/juddi/inquiry
lifeCycleManagerURI  http://localhost:8080/juddi/publish
transportClass        org.apache.ws.scout.transport.AxisTransport
```

RMI

```
queryManagerURI      jnp://localhost:1099/InquiryService?org.apache.juddi.registry.rmi.Inquiry#inquire
lifeCycleManagerURI  jnp://localhost:1099/PublishService?org.apache.juddi.registry.rmi.Publish#publish
transportClass        org.apache.ws.scout.transport.RMITransport
```

Local

```
queryManagerURI      org.apache.juddi.registry.local.InquiryService#inquire
lifeCycleManagerURI  org.apache.juddi.registry.local.PublishService#publish
transportClass        org.apache.ws.scout.transport.LocalTransport
```

For jUDDI we have two requirements that need to be fulfilled:

1. access to the juddi database. You will need to create a schema in your database, and add the jbossesb publisher. The product/install/jUDDI-registry directory contains db create scripts for your favorite database.
2. esb.juddi.xml. The configuration of jUDDI itself. If you do not use a datasource you need to take special care to set the following properties:

```
<entry key="juddi.isUseDataSource">false</entry>
<entry key="juddi.jdbcDriver">com.mysql.jdbc.Driver</entry>
<entry key="juddi.jdbcUrl">jdbc:mysql://localhost/juddi</entry>
```

```
<entry key="juddi.jdbcUsername"=juddi</entry>
<entry key="juddi.jdbcPassword"=juddi</entry>
```

if you do use a datasource you need something like

```
<entry key="juddi.isUseDataSource=true</entry>
<entry key="juddi.dataSource=java:comp/env/jdbc/juddiDB</entry>
```

The database can be automatically created if the user you have created has enough rights to create tables. Next make sure the `isCreateDatabase` flag is set to true, and that the `sqlFiles` parameter settings point to the database you are using. The jUDDI create scripts are located in the `juddi.jar` and jUDDI supports daffodildb, db2, derby, firebird, hsqldb, informix, jdatastore, mysql, oracle, postgresql, sybase (can be used for ms-sqlserver) and totalxml.

```
<!-- <entry key="juddi.tablePrefix">JUDDI </entry> -->
<entry key="juddi.isCreateDatabase"=true</entry>
<entry key="juddi.databaseExistsSql"=select * from
    ${prefix}BUSINESS_ENTITY</entry>
<entry key="juddi.sqlFiles"=juddi-sql/mysql/create_database.sql,
    juddi sql/mysql/insert_publishers.sql</entry>
```

Configuration Examples

Introduction

As mentioned before, by default the JBossESB is configured to use the JAXR API using Scout as its implementation and jUDDI as the registry. Here are some example how you can use deploy this combo.

Embedded

All ESB components (with components we really mean JVMs in this case) can embed the registry and they all can connect to the same database (or different once if that makes sense).

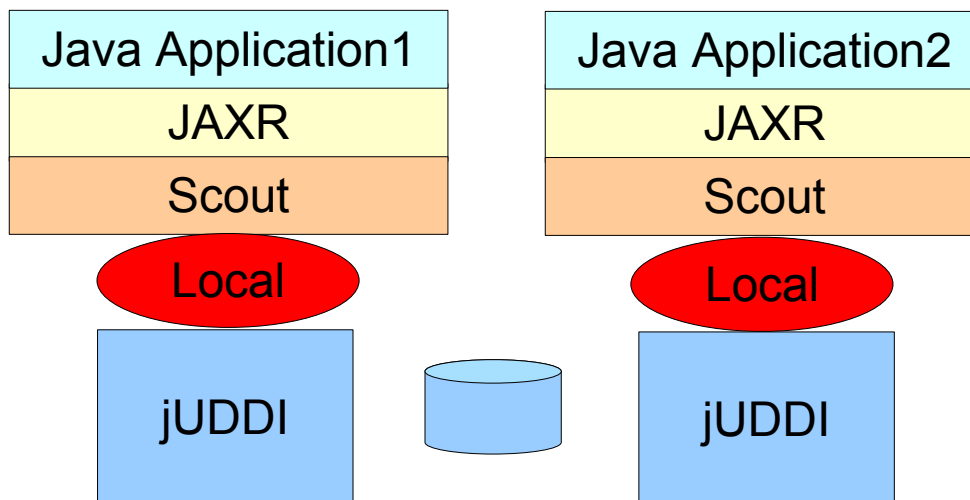


Figure 2. Embedded jUDDI.

Properties example:

```
<properties name="registry">
  <property name="org.jboss.soa.esb.registry.implementationClass"
    value="org.jboss.internal.soa.esb.services.registry.JAXRRegistryImpl"/>
  <property name="org.jboss.soa.esb.registry.factoryClass"
    value="org.apache.ws.scout.registry.ConnectionFactoryImpl"/>
  <property name="org.jboss.soa.esb.registry.queryManagerURI"
    value="org.apache.juddi.registry.local.InquiryService#inquire"/>
  <property name="org.jboss.soa.esb.registry.lifeCycleManagerURI"
    value="org.apache.juddi.registry.local.PublishService#publish"/>
  <property name="org.jboss.soa.esb.registry.user"
    value="jbossesb"/>
  <property name="org.jboss.soa.esb.registry.password"
    value="password"/>
</properties>
```

```

<!-- the following parameter is scout specific to set the type of
communication between scout and the UDDI (embedded, rmi, soap) -->
<property name="org.jboss.soa.esb.scout.proxy.transportClass"
value="org.apache.ws.scout.transport.LocalTransport"/>
</properties>

```

RMI using the juddi.war or jbossesb.sar

Deploy a version of the jUDDI that brings up an RMI service. The JBossESB comes with a juddi.war in the product/install/jUDDI-registry directory. This war brings up the regular webservices but also an RMI service. Along with the juddi.war you need to deploy a datasource which points to your jUDDI database. An example file is supplied for mysql. Note that the jbossesb.sar also registers a rmi service. So you'd only need to deploy the juddi.war if you need webservice access.

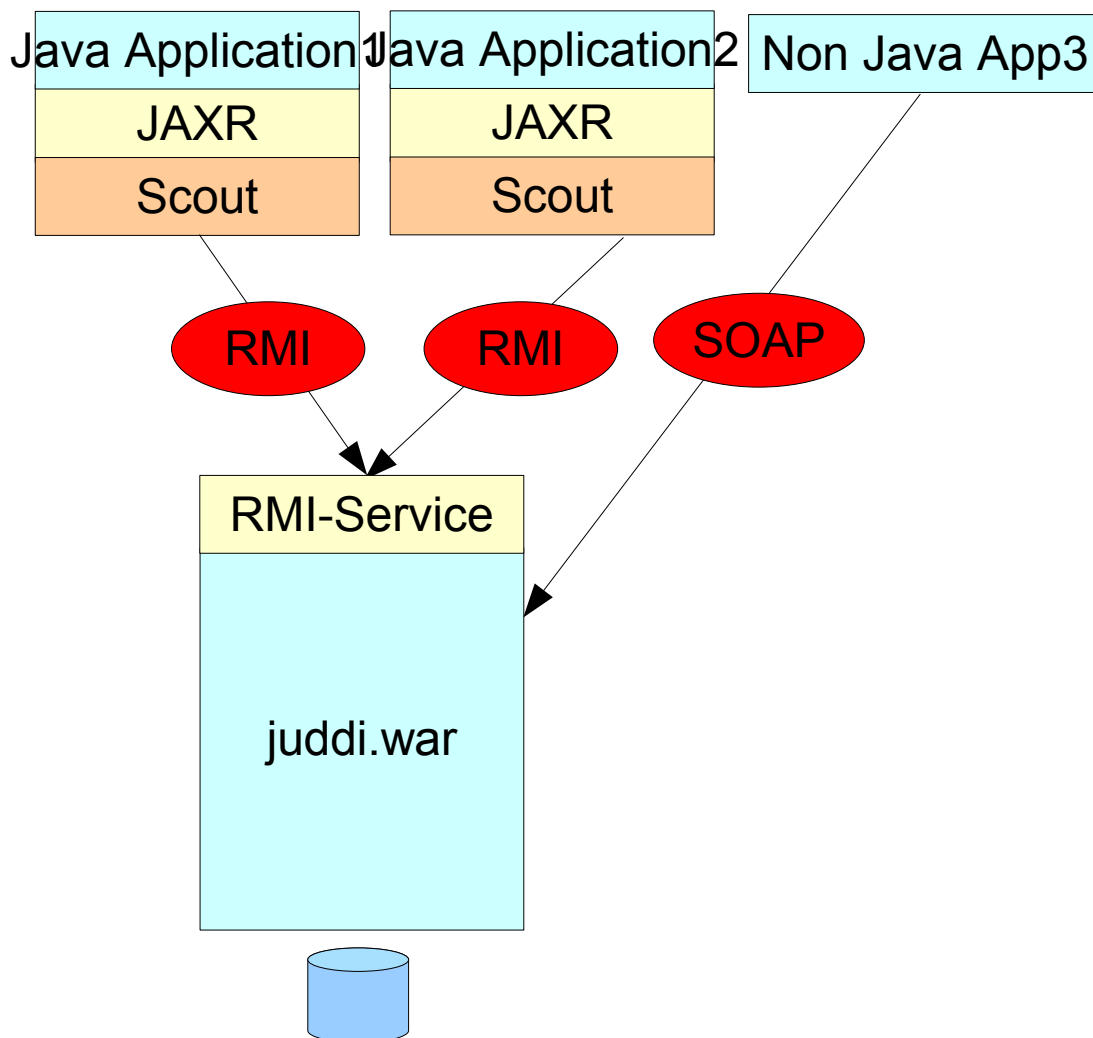


Figure 3. RMI using the juddi.war

Properties example:

```

<properties name="registry">

```



```

        <property name="org.jboss.soa.esb.registry.implementationClass"
value="org.jboss.internal.soa.esb.services.registry.JAXRRegistryImpl"/>
        <property name="org.jboss.soa.esb.registry.factoryClass"
value="org.apache.ws.scout.registry.ConnectionFactoryImpl"/>
        <property name="org.jboss.soa.esb.registry.queryManagerURI"
value="jnp://localhost:1099/InquiryService?org.apache.juddi.registry.rmi.Inquiry#inquire"/>
        <property name="org.jboss.soa.esb.registry.lifeCycleManagerURI"
value="jnp://localhost:1099/PublishService?org.apache.juddi.registry.rmi.Publish#publish"/>
        <property name="org.jboss.soa.esb.registry.user"
value="jbossesb"/>
        <property name="org.jboss.soa.esb.registry.password"
value="password"/>
        <!-- the following parameter is scout specific to set the type of
communication between scout and the UDDI (embedded, rmi, soap) -->
        <property name="org.jboss.soa.esb.scout.proxy.transportClass"
value="org.apache.ws.scout.transport.RMITransport"/>

```

The juddi.war is configured to bring up a RMI Service, which is triggered by the following setting in the web.xml

```

<!-- uncomment if you want to enable making calls in juddi with rmi
-->
<servlet>
    <servlet-name>RegisterServicesWithJNDI</servlet-name>
    <servlet-
class>org.apache.juddi.registry.rmi.RegistrationService</servlet-class>
    <load-on-startup>1</load-on-startup>
</servlet>

```

Make sure to include -for example- the following JNDI settings in your juddi.properties:

```

# JNDI settings (used by RMITransport)
java.naming.factory.initial=org.jnp.interfaces.NamingContextFactory
java.naming.provider.url=jnp://localhost:1099
java.naming.factory.url.pkgs=org.jboss.naming

```

| The RMI clients need to have the scout-client.jar in their classpath.

RMI using your own JNDI Registration of the RMI Service

If you don't want to deploy the juddi.war you can setup one of the ESB components that runs in the the same JVM as jUDDI to register the RMI service. While the other applications need to be configured to use RMI.

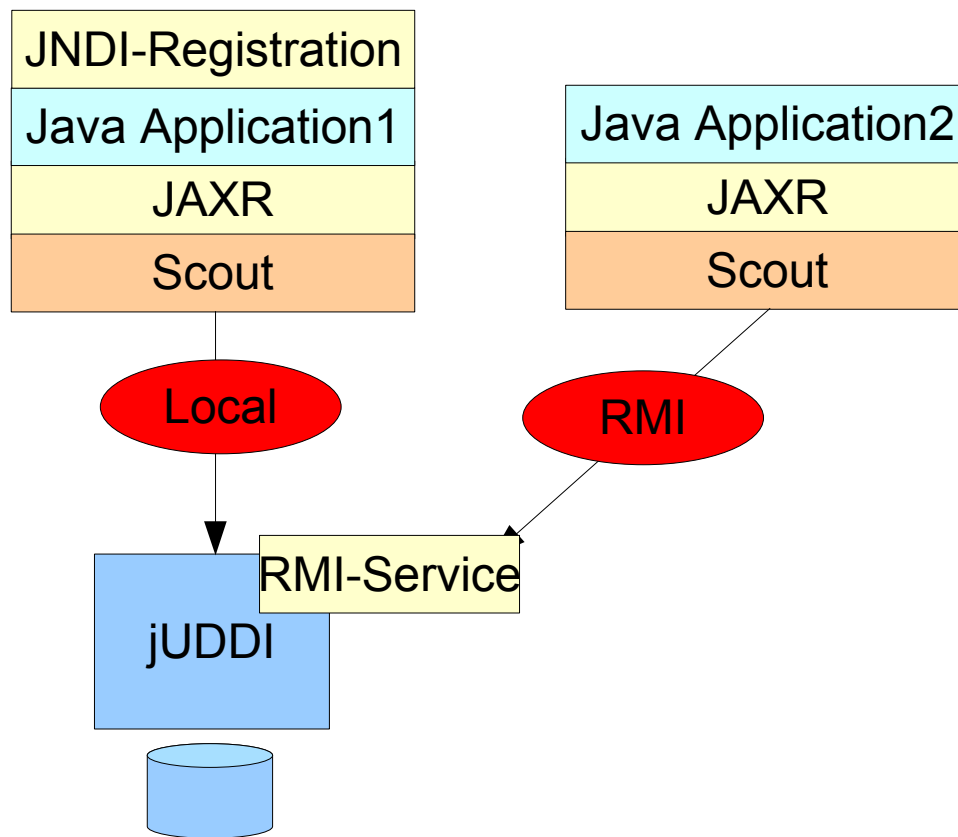


Figure 4. RMI using your own JNDI registration

Properties example: For application 1 you need need the Local settings:

```
<properties name="registry">
  <property name="org.jboss.soa.esb.registry.implementationClass"
value="org.jboss.internal.soa.esb.services.registry.JAXRRegistryImpl"/>
  <property name="org.jboss.soa.esb.registry.factoryClass"
value="org.apache.ws.scout.registry.ConnectionFactoryImpl"/>
  <property name="org.jboss.soa.esb.registry.queryManagerURI"
value="org.apache.juddi.registry.local.InquiryService#inquire"/>
  <property name="org.jboss.soa.esb.registry.lifeCycleManagerURI"
value="org.apache.juddi.registry.local.PublishService#publish"/>
  <property name="org.jboss.soa.esb.registry.user"
value="jbossesb"/>
  <property name="org.jboss.soa.esb.registry.password"
value="password"/>
  <!-- the following parameter is scout specific to set the type of
communication between scout and the UDDI (embedded, rmi, soap) -->
  <property name="org.jboss.soa.esb.scout.proxy.transportClass"
value="org.apache.ws.scout.transport.LocalTransport"/>
</properties>
```

while for application2 you need the RMI settings:

```
<properties name="registry">
  <property name="org.jboss.soa.esb.registry.implementationClass"
value="org.jboss.internal.soa.esb.services.registry.JAXRRegistryImpl"/>
```

```

    <property name="org.jboss.soa.esb.registry.factoryClass"
value="org.apache.ws.scout.registry.ConnectionFactoryImpl"/>
    <property name="org.jboss.soa.esb.registry.queryManagerURI"
value="jnp://localhost:1099/InquiryService?org.apache.juddi.registry.rm
i.Inquiry#inquire"/>
    <property name="org.jboss.soa.esb.registry.lifeCycleManagerURI"
value="jnp://localhost:1099/PublishService?org.apache.juddi.registry.rm
i.Publish#publish"/>
    <property name="org.jboss.soa.esb.registry.user"
value="jbossesb"/>
    <property name="org.jboss.soa.esb.registry.password"
value="password"/>
    <!-- the following parameter is scout specific to set the type of
communication between scout and the UDDI (embedded, rmi, soap) -->
    <property name="org.jboss.soa.esb.scout.proxy.transportClass"
value="org.apache.ws.scout.transport.RMITransport"/>

```

Where the hostname of the queryManagerURI and lifeCycleManagerURI need to point to the hostname on which jUDDI is running (which would be where application1 is running). Obviously application1 needs to have access to a naming service. To do the registration process you need to do something like:

```

//Getting the JNDI setting from the config
String factoryInitial = Config.getStringProperty(
Properties env = new Properties();
env.setProperty(RegistryEngine.PROPNAME_JAVA_NAMING_FACTORY_INITIAL, factoryInit
ial);
env.setProperty(RegistryEngine.PROPNAME_JAVA_NAMING_PROVIDER_URL, providerURL);
env.setProperty(RegistryEngine.PROPNAME_JAVA_NAMING_FACTORY_URL_PKGS,
factoryURLPkgs);
log.info("Creating Initial Context using: \n"
+ RegistryEngine.PROPNAME_JAVA_NAMING_FACTORY_INITIAL + "=" + factoryInitial +
"\n"
+ RegistryEngine.PROPNAME_JAVA_NAMING_PROVIDER_URL + "=" + providerURL +
"\n"
+ RegistryEngine.PROPNAME_JAVA_NAMING_FACTORY_URL_PKGS + "=" + factoryURLPkgs
+ "\n");
InitialContext context = new InitialContext(env);
Inquiry inquiry = new InquiryService();
log.info("Setting " + INQUIRY_SERVICE + ", " + inquiry.getClass().getName());
mInquiry = inquiry;
context.bind(INQUIRY_SERVICE, inquiry);
Publish publish = new PublishService();
log.info("Setting " + PUBLISH_SERVICE + ", " + publish.getClass().getName());
mPublish = publish;
context.bind(PUBLISH_SERVICE, publish);

```

2.4 SOAP

Finally, you can make the communication between Scout and jUDDI SOAP based. Again you need to deploy the juddi.war and configure the datasource. You probably want to shutdown the RMI service by commenting out the RegisterServicesWithJNDI servlet in the web.xml.

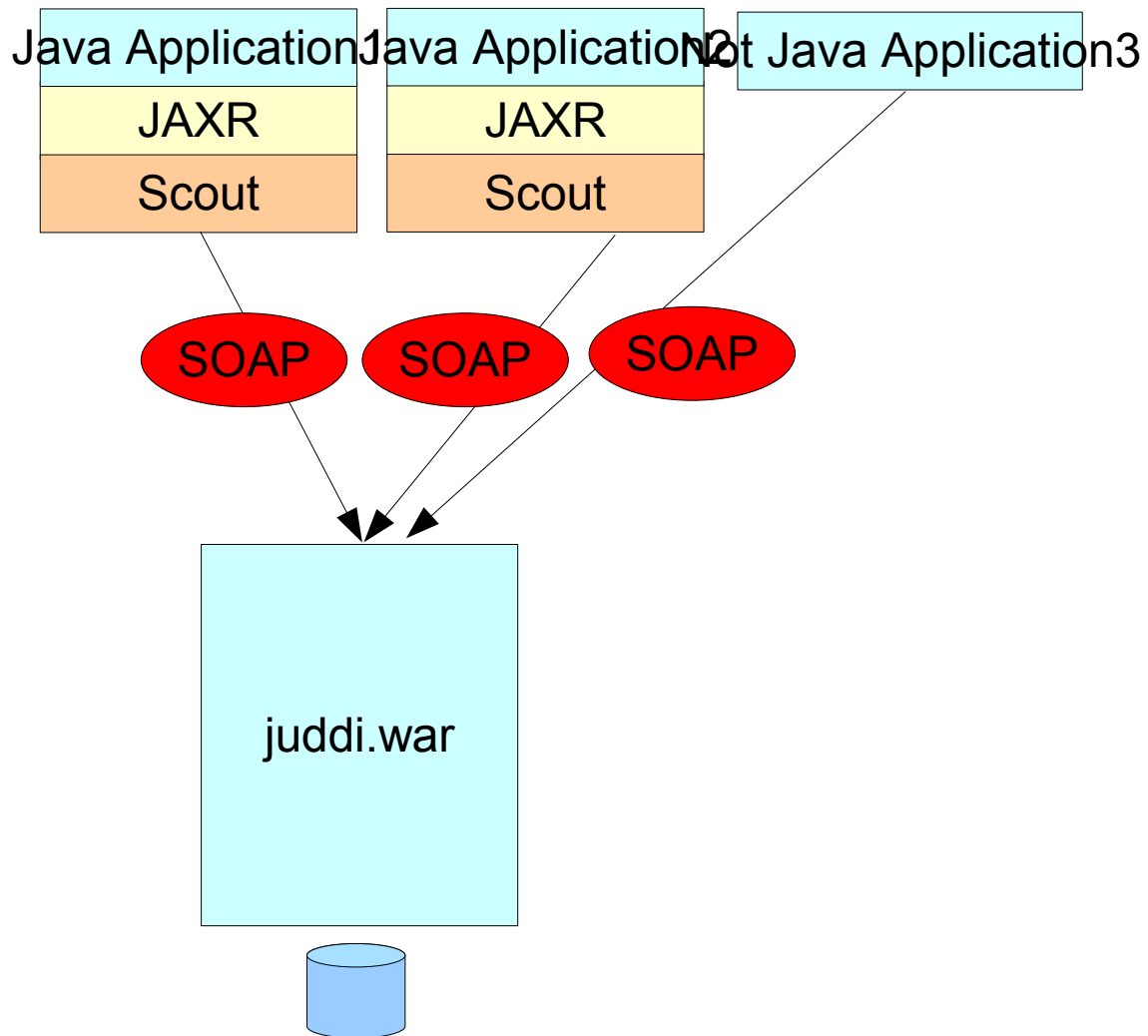


Figure 5. SOAP.

Properties example:

```
<properties name="registry">
  <property name="org.jboss.soa.esb.registry.implementationClass"
value="org.jboss.internal.soa.esb.services.registry.JAXRRegistryImpl"/>
  <property name="org.jboss.soa.esb.registry.factoryClass"
value="org.apache.ws.scout.registry.ConnectionFactoryImpl"/>
  <property name="org.jboss.soa.esb.registry.queryManagerURI"
value="http://localhost:8080/juddi/inquiry"/>
  <property name="org.jboss.soa.esb.registry.lifeCycleManagerURI"
value="http://localhost:8080/juddi/publish"/>
  <property name="org.jboss.soa.esb.registry.user"
value="jbossesb"/>
  <property name="org.jboss.soa.esb.registry.password"
value="password"/>
  <!-- the following parameter is scout specific to set the type of
communication between scout and the UDDI (embedded, rmi, soap) -->
```

```
<property name="org.jboss.soa.esb.scout.proxy.transportClass"  
value="org.apache.ws.scout.transport.AxisTransport"/>
```

Clustered JBossAS

The JBoss 4.0.x -all profile ships with older versions of scout and juddi. It is recommended to remove the juddi.sar to prevent versioning issues.

UDDI Browser

Introduction

We are looking for a good web based console for jUDDI. In the meantime you can browse the jUDDI registry using the uddibrowser. The uddibrowser 'ub' can be downloaded from <http://www.uddibrowser.org>. Before configuring the ub make sure the juddi.war is deployed to the jbossesb.sar, to enable WS communication to jUDDI.

UB setup

The ub is a standalone Java application. Start the ub and select Edit > UDDI Registries, and add an entry called jUDDI

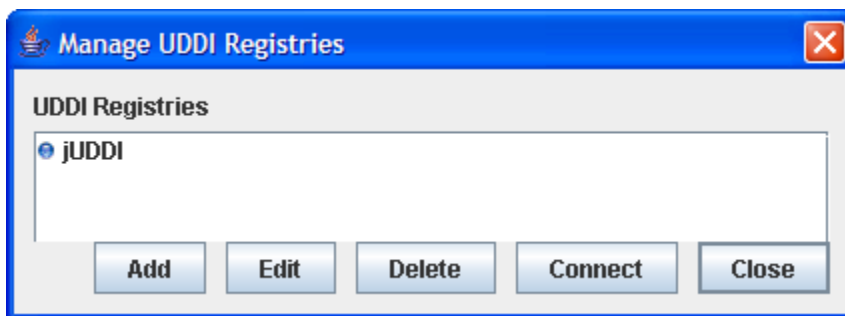


Figure 6. Add a connection.

with settings

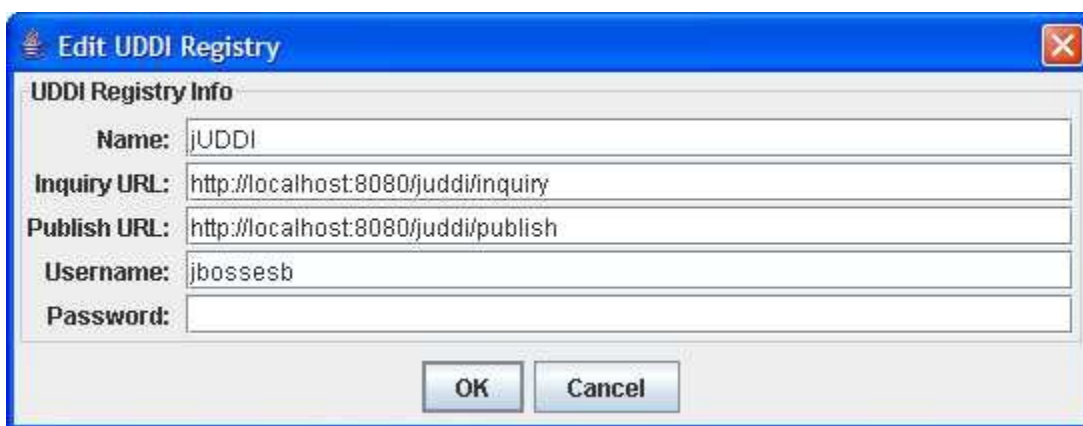


Figure 7. jUDDI connection settings

Click on 'connect' and select View > Find More > Find All Businesses

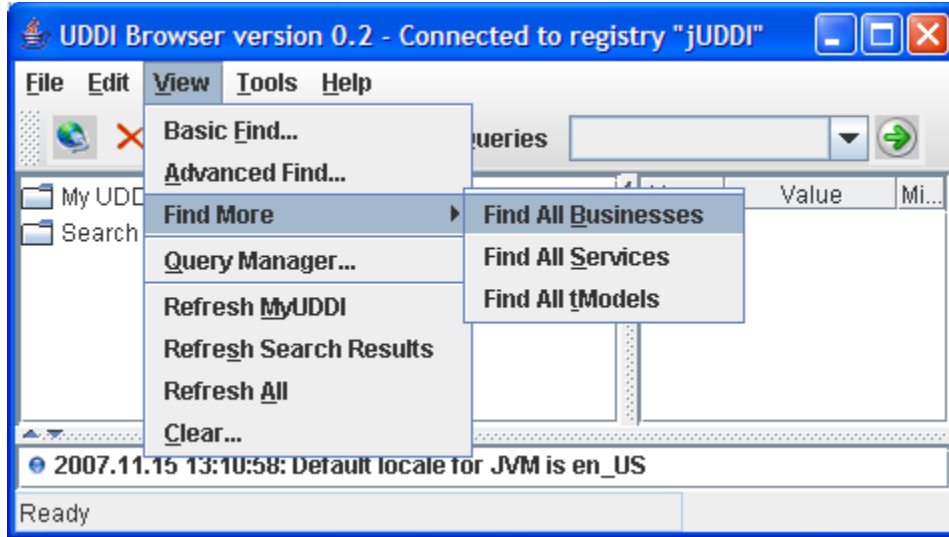


Figure 8. View all Businesses.

and in the left nav you should see the Red Hat/JBossESB organization. You can navigate into the individual services and their ServiceBindings.

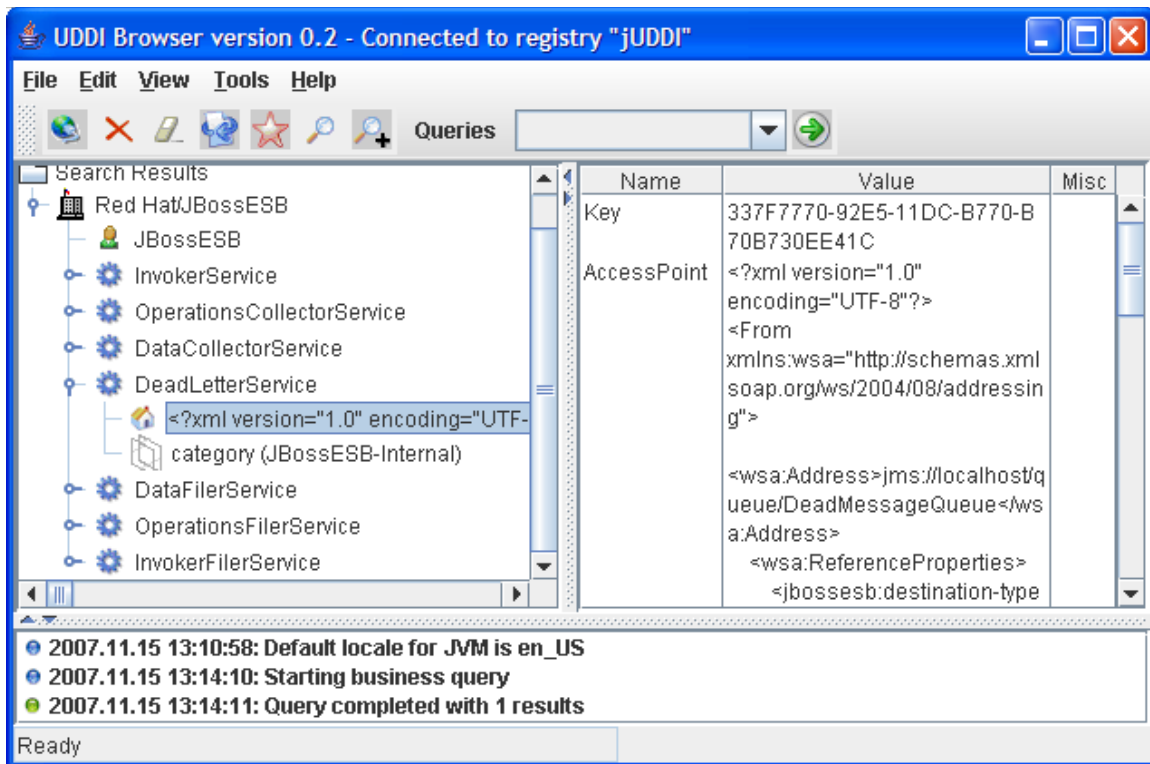


Figure 9. View Services and ServiceBindings.

Each ServiceBinding contains an EPR in its AccessPoint.

Some features of the uddibrowser may not work, but it should give enough functionality to maintain jUDDI. As mentioned before we are looking for a good web based console for jUDDI.

Troubleshooting

Scout and jUDDI pitfalls

- Make sure to put our version of the `jaxr-api-1.0.jar`, `scout-0.7rc2-embedded.jar` and the `juddi-embedded.jar` first. Other versions of these libraries are present in the JbossAS libraries and they are, for the time being, incompatible. This should get resolved in future release of the Application Server.
- If you use RMI you need the `juddi-client.jar`.
- Make sure the `jbossesb-properties.xml` file is on the classpath and read or else the registry will try to instantiate classes with the name of 'null'.
- Make sure you have a `juddi.properties` file on your classpath for jUDDI to configure itself. JBossESB uses `esb.juddi.xml`, but generates the `juddi.properties` file for jUDDI to read.
- Make sure to read the README in the `product/install/jUDDI-registry` directory, to prepopulate your own juddi database.
- In the event that a service fails or does not shut down cleanly, it is possible that stale entries may persist within a registry. You will have to remove these manually.

More Information

- For more information see the wiki <http://labs.jboss.com/wiki/JudyEvaluation>
- JBossESB user forum: <http://www.jboss.com/index.html?module=bb&op=viewforum&f=246>
- When you deploy the `juddi.war` that ship with our esb, you enable access through soap, which means that you can use any uddi browser. You can use <http://uddibrowser.org>